

# Drawing



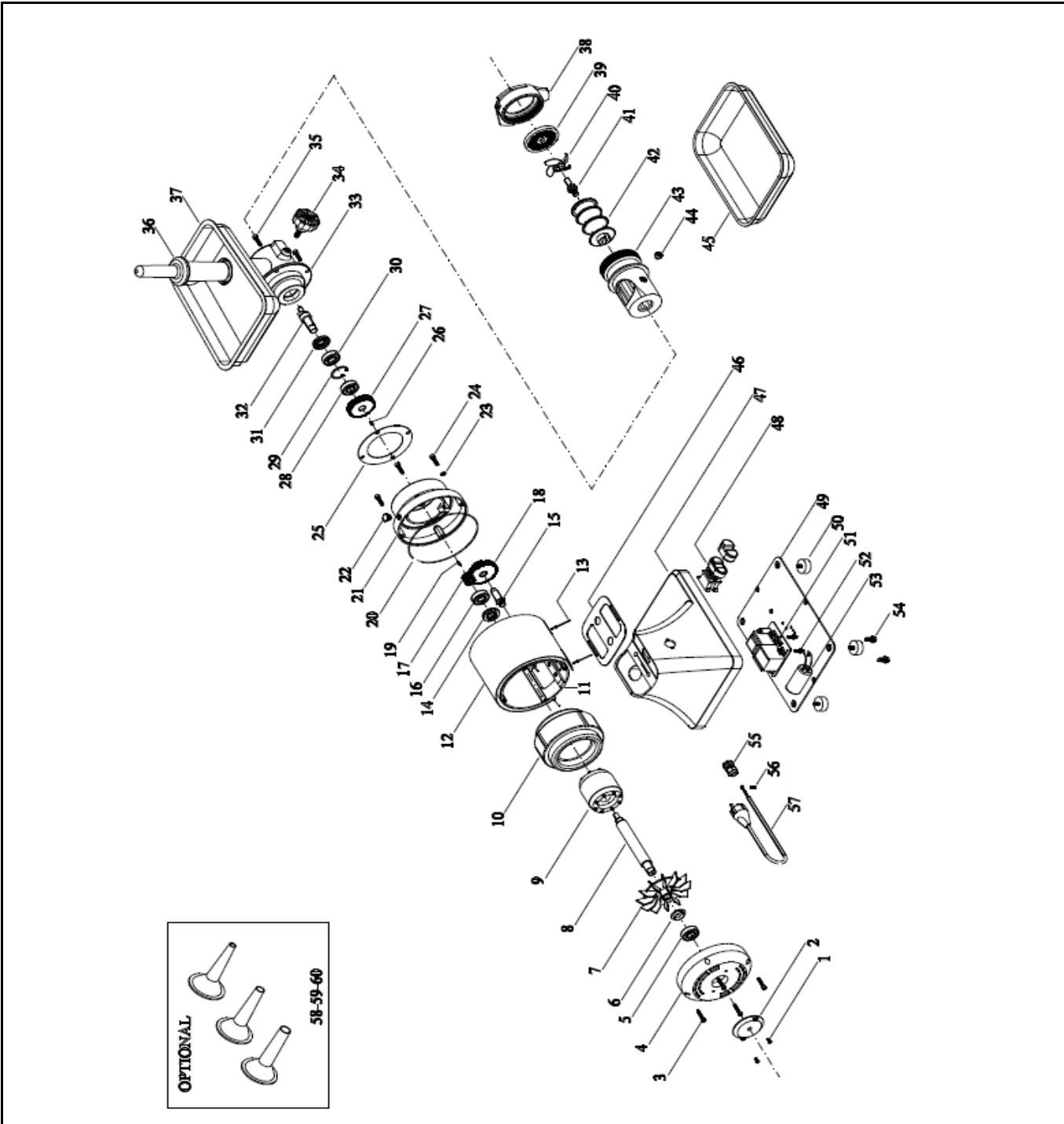
**Hendi B.V.**  
 Steenoven 21  
 3911 TX Rhenen  
 The Netherlands

**Batch #**  
 Batch nr 101031  
 and up


**Appliance part#**  
**282007**

**Description**  
**Meat mincer Kitchen line 22**

<b>Date</b>	03-01-2018	<b>Revision #</b>	Revision version
<b>Revision</b>	Firsts bill of materials (BOM)		



### Bill of materials (BOM)

 <b>Hendi B.V.</b> Steenoven 21 3911 TX Rhenen The Netherlands	<b>Batch #</b>	<b>Appliance part#</b>
	Batch nr 101031 and up	<b>282007</b>
	<b>Description</b>	
	<b>Meat mincer Kitchen line 22</b>	


<b>Date</b>	03-01-2018	<b>Revision #</b>	Revision version
<b>Revision</b>	Firsts bill of materials (BOM)		

Item	Description	Part#	Quantity	Remark	Picture
1	Socket screw M4x8	n/a	2		
2	Cover bearing	n/a	1		
3	Socket screw M4x30	n/a	4		
4	Fan cover	n/a	1		
5	Bearing (6203 RS)	940686	1		
6	Fan retainer	n/a	1		
7	Fan	n/a	1		
8	Shaft	nss	1	Available as 940426	
9	Rotor	940426	1	Incl item 8	
10	Stator	n/a	1		
11	Strip	n/a	1		
12	Housing stator	n/a	1		
13	Rivets	n/a	2		
14	Oil seal (25x40x7)	939970	1		
15	Axle	940433	1		
16	Bearing (6203 RS)	940686	1		
17	Gear (small)	940525	1		
18	Gear (large double)	940518	1		
19	Key 3x3x15mm	940532	1		
20	O-Ring Ø164,5x2	940594	1		
21	Gear housing	n/a	1		
22	Grommet	n/a	1		
23	Washer M6	n/a	4		
24	Socket screw M6x25	n/a	4		
25	Seal	n/a	1		
26	Key 4x4x12mm	940549	1		
27	Gear (large)	940556	1		
28	Bearing (6203 RS)	940686	1		
29	Circlip	940563	1		
30	Bearing (6203 RS)	940686	1		
31	Oil seal (25x40x7)	939970	1		
32	Drive shaft	940570	1		
33	Hopper	940440	1		
34	Knob	940600	1		
35	Socket screw M6x18	n/a	4		
36	Stick	929216	1		
37	Feeder tray	940709	1		
38	Front ring nut aluminum	940457	1		
39a	Perforated plate Ø6mm	282021	1	* Standard	
39b	Perforated plate Ø8mm	282014	1	* Optional	
39c	Perforated plate Ø4,5mm	282038	1	* Optional	
39d	Perforated plate Ø3mm	282045	1	* Optional	
39e	Perforated plate Ø2mm	282052	1	* Optional	
40	Knife	282076	1		
41	Drive shaft / knife holder	940464	1		
42	Worm screw aluminum	282069	1	* Standard	
43	Replacement cylinder	940471	1		
44	Locking seat	n/a	1		
45	Meat tray	508206	1		
58	Sausage stuffing tube 15mm	939826	1	* Optional	
59	Sausage stuffing tube 20mm	939833	1	* Optional	
60	Sausage stuffing tube 25mm	939840	1	* Optional	

n/a -> not available

nss -> not sold separately

### Circuit diagram

 <b style="font-size: 2em; color: red;">HENDI</b> FOOD SERVICE EQUIPMENT  <b>Hendi B.V.</b> Steenoven 21 3911 TX Rhenen The Netherlands	<b>Batch #</b>	<b>Appliance part#</b>
	Batch nr 101031 and up	<b>282007</b>
	<b>Description</b>	
	Meat mincer Kitchen line 22	

<b>Date</b>	03-01-2018	<b>Revision #</b>	Revision version
<b>Revision</b>	Firsts bill of materials (BOM)		

