
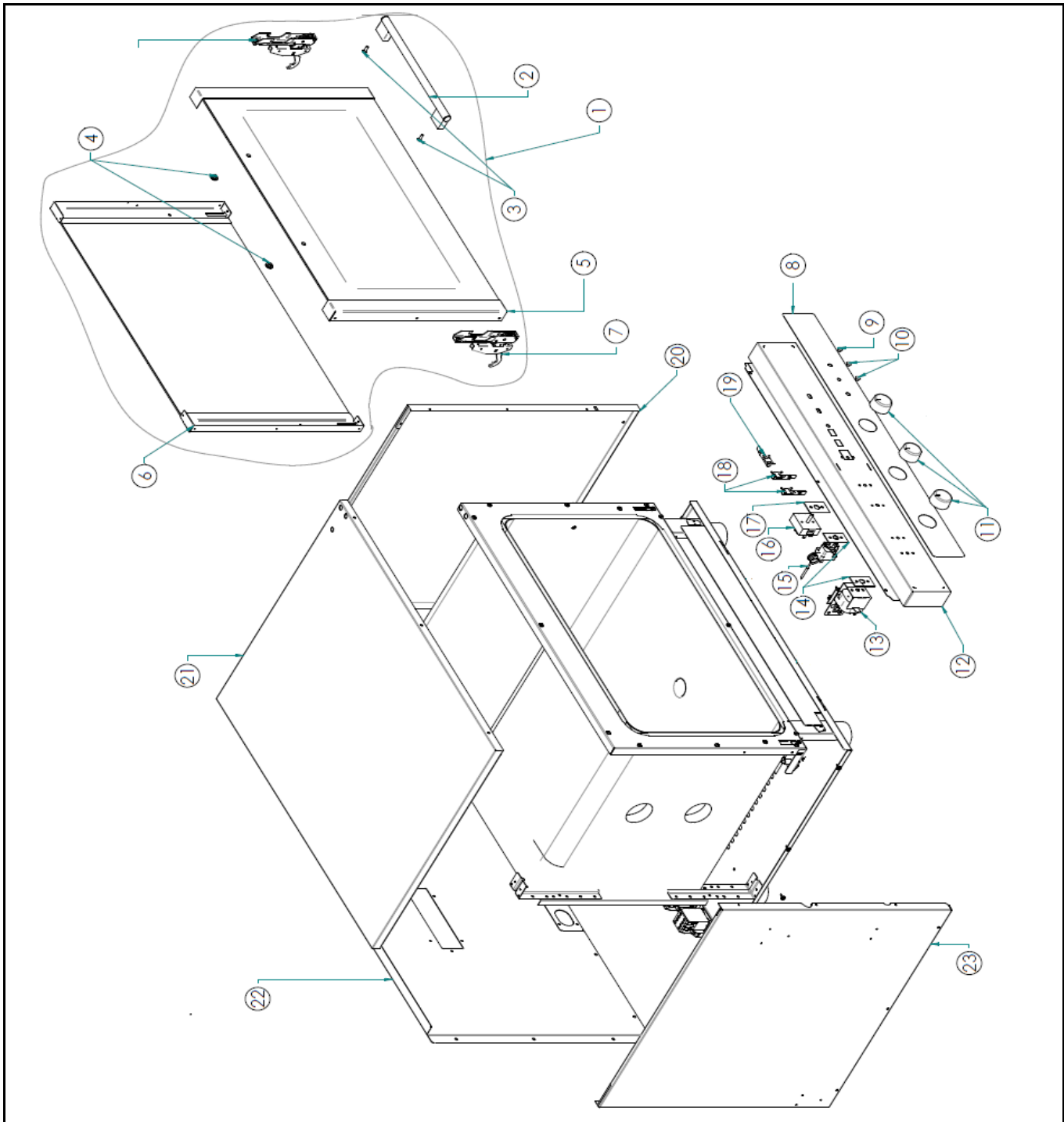



Drawing

 HENDI FOOD SERVICE EQUIPMENT Hendi B.V. Steenoven 21 3911 TX Rhenen The Netherlands	Batch #	Appliance part#
	500352 and up	225523
	Description	
	Oven with steam injection	

Date	20-10-2020	Revision #	Revision version
Revision	First bill of materials (BOM)		



Bill of materials (BOM)

 Hendi B.V. Steenoven 21 3911 TX Rhenen The Netherlands	Batch #	Appliance part#
	500352 and up	225523
	Description	
Oven with steam injection		


Date	20-10-2020	Revision #	Revision version
Revision	First bill of materials (BOM)		

Item	Description	Part#	Quantity	Remark	Picture
1	Door complete	934968	1	Incl item 2,3,4,5,6,7,	
2	Door handle	nss	1	Available as 934968	
3	Bolt	nss	2	Available as 934968	
4	Washer	nss	2	Available as 934968	
5	Doorglass	nss	1	Available as 934968	
6	Inner door glass	nss	1	Available as 934968	
7	Hinge	934975	1	Also in set 934968	
8	Display sticker	n/a	1		
9	Light cover green	nss	1	Available as 910191	
10	Light cover orange	nss	1	Available as 910184	
11	Knob	225349	1		
12	Display panel	n/a	1		
13	Timer with buzzer	931455	1		
14	Bracket	n/a	2		
15	Thermostat	910078	1		
16	Energy regulator	201121	1		
17	Bracket	n/a	1		
18	Indicator light orange	910184	2	Incl item 10	
19	Indicator light green	910191	1	Incl item 9	
20	Right side cover	n/a	1		
21	Top cover	n/a	1		
22	Back cover	n/a	1		
23	Left side cover	n/a	1		

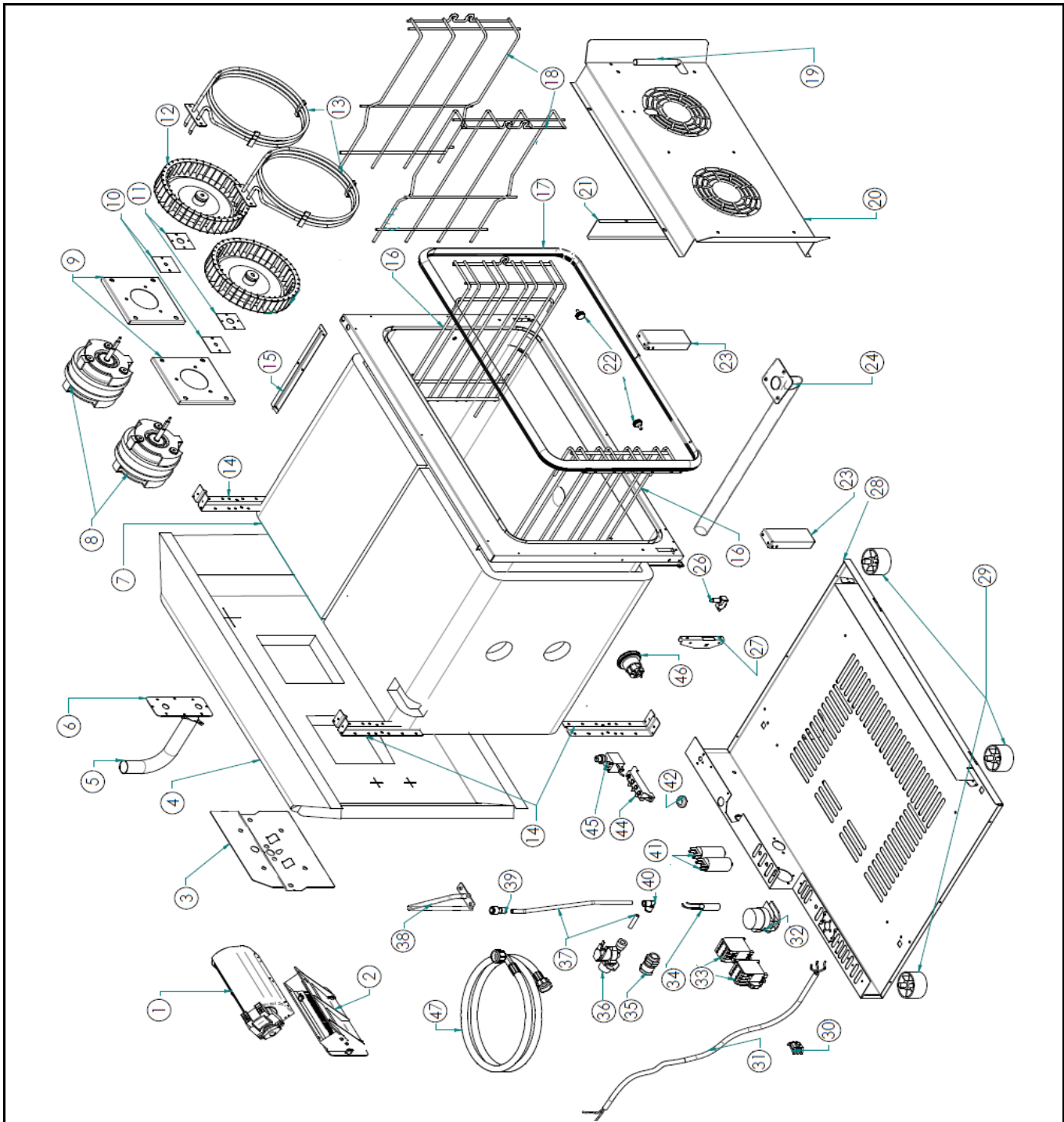
n/a -> not available

nss -> not sold separately


Drawing

 HENDI FOOD SERVICE EQUIPMENT Hendi B.V. Steenoven 21 3911 TX Rhenen The Netherlands	Batch #	Appliance part#
	500352 and up	225523
	Description	
	Oven with steam injection	

Date	20-10-2020	Revision #	Revision version
Revision	First bill of materials (BOM)		



Bill of materials (BOM)

 HENDI <small>FOOD SERVICE EQUIPMENT</small> Hendi B.V. Steenoven 21 3911 TX Rhenen The Netherlands	Batch #	Appliance part#
	500352 and up	225523
	Description	
Oven with steam injection		


Date	20-10-2020	Revision #	Revision version
Revision	First bill of materials (BOM)		

Item	Description	Part#	Quantity	Remark	Picture
1	Radial fan	934937	1		
2	Fan cover	n/a	1		
3	Fan bracket	n/a	1		
4	Insulation	n/a	1		
5	Vent pipe	n/a	1		
6	Silicone sealing	n/a	1		
7	Insulation	n/a	1		
8	Fan motor (reverseable)	935019	2		
9	Fan bracket	n/a	2		
10	Gasket	n/a	2		
11	Cover	n/a	2		
12	Fan	n/a	2		
13	Element 230V 3000W	935033	2		
14	Bracket	n/a	5		
15	Bracket	n/a	1		
16	Tray support left/right (GN)	935194	2	(Set of 2pcs)	
17	Door gasket	935248	1		
18	Tray support left/right (Bakery set)	935170	2	(Set of 2pcs)	
19	Tube s/s humifider	n/a	1		
20	Deflector plate	n/a	1		
21	Bracket	n/a	1		
22	Bolt (tray support)	935224	2		
23	Cover	n/a	2		
24	Drain pipe	n/a	1		
26	Doorswitch	915431	1		
27	Hinge support	n/a	2		
28	Bottom cover	n/a	1		
29	Feet	225370	4		
30	Grounding bolt	n/a	1		
31	Power cord	n/a	1		
32	Fan timer	935149	1		
33	Relay	935071	2		
34	Interference suppressor	935132	1		
35	Pull relief	n/a	1		
36	Watervalve 1-way	935064	1		
37	Tubing	n/a	1		
38	Tubing s/s	n/a	1		
39	Connector	n/a	1		
40	Connector elbow	n/a	1		
41	Capacitor 6,3µF	935125	2		
42	Grommet	n/a	1		
44	Terminal	n/a	1		
45	Hi-limiter	935118	1		
46	Lamp fitting complete	928493	2		
46a	Lamp halopin 40W	930106	2		
47	Water hose	n/a	1	*Obtain locally	

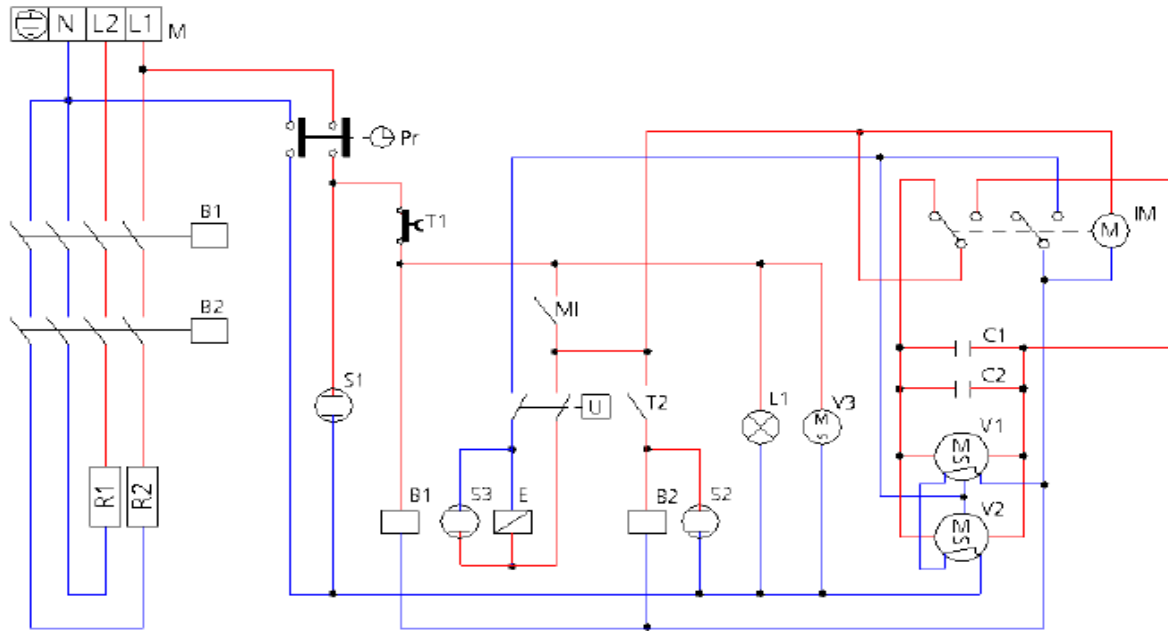
n/a -> not available

nss -> not sold separately

Circuit diagram

 <p>Hendi B.V. Steenoven 21 3911 TX Rhenen The Netherlands</p>	Batch #	Appliance part#
	500352 and up	225523
	Description	
	Oven with steam injection	

Date	20-10-2020	Revision #	Revision version
Revision	First bill of materials (BOM)		



Key

<p>M Power terminal board Pr "End of cooking" programmer MI Door microswitch T1 Safety thermostat T2 Control thermostat R1-R2 Circular heating elements E Humidifier solenoid-valve U Humidifier switch L1 Lighting lamp</p>	<p>V1-V2 Radial motoventilators V3 Tangential motorised ventilator C1-C2 Capacitors IM Operating direction reversing element B1-B2 Contactors coil S1 Programmer indicator light S2 Thermostat indicator light S3 Humidity indicator light</p>
--	--