



# DELUXE COMBISTEAMER

MODEL: 6 TRAYS - 60X40  
DIGITAL - GAS



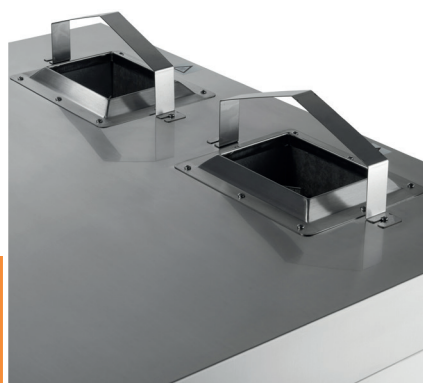
## SPECIFICATIONS

Gas Power	13,5 kW
Connection	230V / 50Hz / 1phase
Nett Weight	123.0 Kg
Gross Weight	145.0 Kg
Machine Dimensions	H700 x W500 x D930 mm
Packaging Dimensions	H870 x W570 x D980 mm
Packaging Volume	1.00 CBM
Packaging Material	Carton Box with Foam
HS Customs Code	84172090
EAN Code	8720365344329
Article Number	08560666

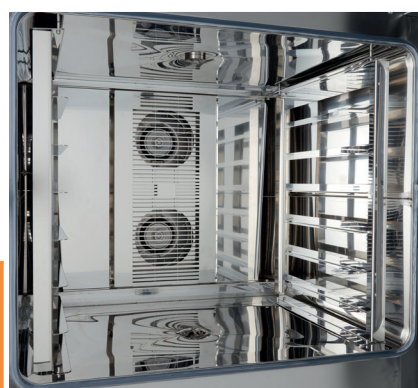
Professional, easy-to-operate bake-off / bakery oven  
 Robust stainless steel housing, door and inner chamber  
 Powerful stainless steel heating elements  
 Efficient heat distribution (semi-static and ventilated)  
 Equipped with 2 fans with reverse function  
 Double athermal glazing  
 Digital touch display for humidity, temperature and time  
 Touch display with Black Mask technology  
 Cooking time adjustable in minutes and hours  
 Fully adjustable for perfect preparation  
 100 programs with 10 phases  
 10 steam levels: 10% - 100% steam  
 Temperature from 30°C to 260°C  
 Preheating temperature 180°C  
 Equipped with a cooling function  
 Automatic fault indication system  
 With USB port for HACCP data and programs  
 Safety switch against overheating  
 With lighting in the inner chamber  
 Stands on 4 height adjustable feet  
 Inner chamber dimensions: B600 x D400 x H700 mm  
 Tray distance: 80 mm

***This product is supplied without plug***

- 👑 HIGH QUALITY / LOW PRICES
- 👑 24 / 7 SUPPORT & SERVICE
- 👑 IMMEDIATELY AVAILABLE FROM STOCK
- 👑 TECHNICAL DEPARTMENT & WARRANTY
- 👑 EXCELLENT CUSTOMER SATISFACTION



Double chimney on top



Capacity for 6 trays 600 x 400 mm



Easily adjustable door