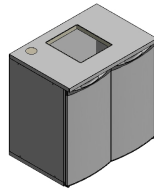


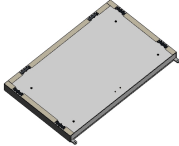

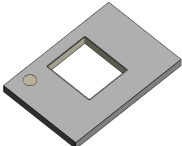


Art. Code: 10401001-0-0-0



Keg Box - 2x1
 Chambre de Refroidissement des Fûts - 2x1
 Câmara para Arrefecimento de Barris - 2x1
 Cella per fusti - 2x1

Code	Description	
41801084	Magnetic gasket 966 x 494 mm Joint magnétique 966 x 494 mm Vedantes 966 x 494 cinz. - NOVO Guarnizione magnetica 966 x 494 mm Magnetdichtung 966 x 494 mm Burlate magnético 966 x 494 mm	
42601066	Floor covers Caches du sol Taco para Pés V1 Cappucci del pavimento Abdeckungen für Paneelboden Tapa furos del suelo	
42601068	Screw cap for 6 mm hexagonal hole Cache pour trou à six pans 6 mm Taco Cinza p/ Furo Sextavado de 6 mm Cappucci per perforazione ad esagono di 6 mm Kunststoffstopfen für Bohrung mit 6 mm Sechskant Tapone para perforación hezagonal de 6 mm	
45903001	Hex key 6 mm Clé Allen 6 mm Chave Umbrako 6 mm Chiave di brugola 6 mm Innensechskantschlüssel 6 mm Llave Allen 6 mm	
45907001	Lower stainless steel stud screw diam.15 x 27 mm Boulon inférieur en acier inox diam.15 x 27 mm Perno Inferior Inox diam.15 x 27 mm Perno inferiore in acciaio inox diam.15 x 27 mm Unterer Bolzen aus Edelstahl diam.15 x 27 mm Perno inferior en acero inoxidable diam.15 x 27 mm	
45907010	Upper galvanized bolt diam.11,5 x 34 mm Boulon supérieur galvanisé diam.11,5 x 34 mm Perno Superior V1 Zinc. diam.11,5 x 34 mm Perno superiore zincato diam.11,5 x 34 mm Oberer verzinkter Bolzen aus Edelstahl diam.11,5 x 34 mm Perno superior galvanizado diam.11,5 x 34 mm	
61401013	Back panel Panneau arrière Painel da Costa - 2B (V1-C01) Pannello posteriore Rückwandpaneel Panel posterior	
61401211	Ironmongery set Ensemble de quincaillerie Conjunto de Ferragens das Câmaras V1- 2B Set di ferramenta Eisenwaren Einsatz Conjunto de ferrería	

61401278	Right hand door Porte droite Porta Pequena Direita CPL (V1-PP) Porta destra Rechtsseitige Tür Puerta derecha	
61401279	Left hand door Porte gauche Porta Pequena Esquerda CPL (V1-PP) Porta sinistra Linksseitige Tür Puerta izquierda	
61401296	Floor panel Panneau de sol Painel do Fundo - 2x1B (V1- F01) Pannello pavimento Paneelboden Panel de suelo	
61401303	Side panel Panneau latéral Painel Lateral - 1B (V1-L01) Pannello laterale Seitenwandpaneel Panel lateral	
61401307	Top panel Panneau du dessus Painel do Tampo - 2x1B (V1-T01) Pannello del piano Abdeckplatte Panel de encimera	
61401311	Pillar Pilier Pilar CPL Pilastro Säule Pilar	