

Drawing



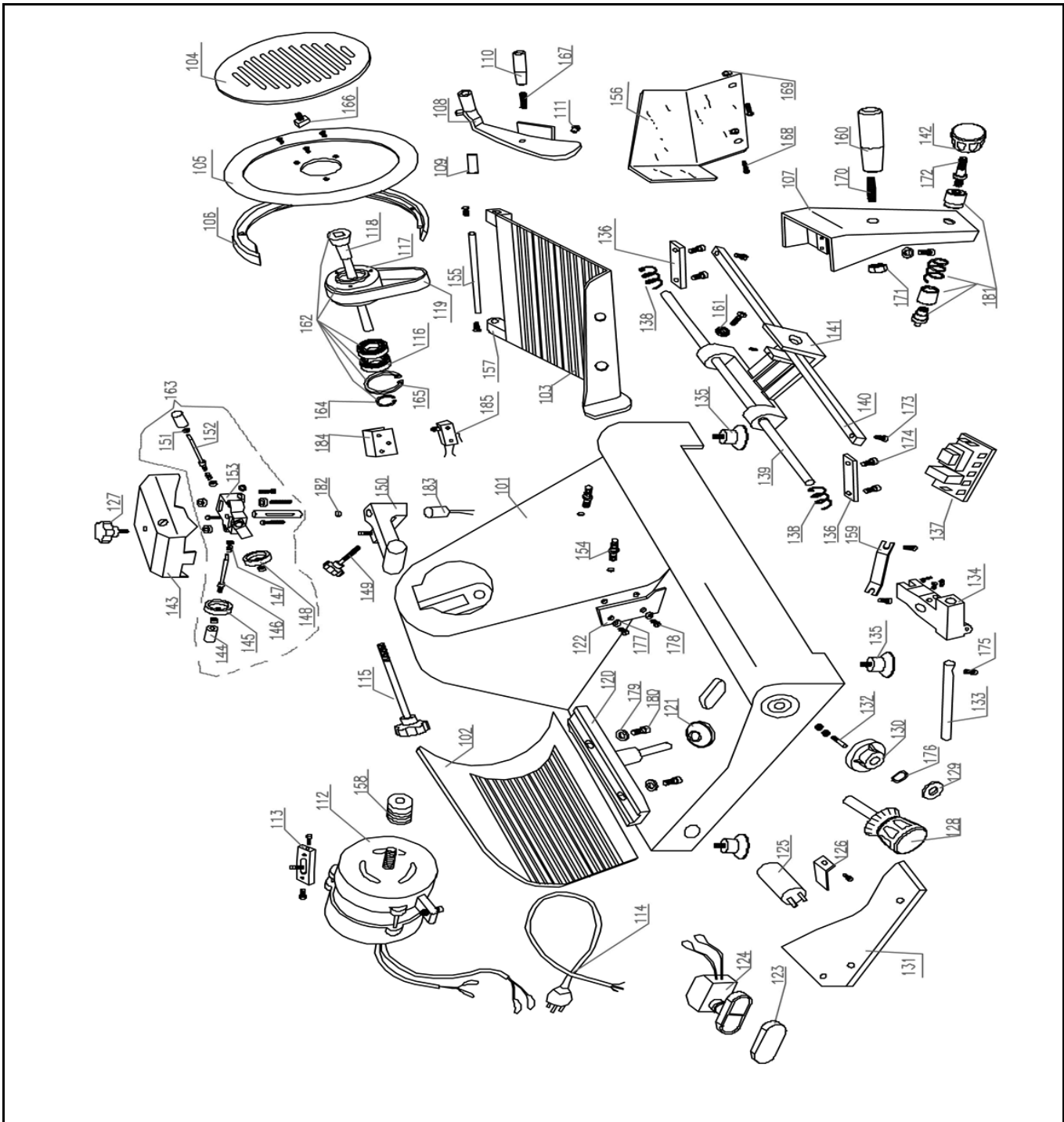
Hendi B.V.
 Steenoven 21
 3911 TX Rhenen
 The Netherlands

Batch #
 0000000


Appliance part#
 210017

Description
 Slicer Hendi 300 ES

Date	03-04-2013	Revision #	Revision version
Revision	First bill of materials (BOM)		



Bill of materials (BOM)

 <p>Hendi B.V. Steenoven 21 3911 TX Rhenen The Netherlands</p>	Batch #	Appliance part#
	0000000	210017
	Description	
Slicer Hendi 300 ES		

Date	03-04-2013	Revision #	Revision version
Revision	First bill of materials (BOM)		


Item	Description	Part#	Quantity	Remark	Picture
101	Housing	n/a	1		
102	Plate (thickness adjustment)	903926	1		
103	Sledge complete	903971	1	Incl item 107,108,109,110,111,142,155,156,157,160,167,168,169,170,171,172,181.	
104	Guard disc blade	901946	1	Incl item 166	
105	Knife (300mm)	901922	1		
106	Guard ring	n/a	1		
107	Bracket sledge	nss	1	Available as 903971	
108	Product holder	926369	1	Incl item 109,110,111,167. Also in set 903971	
109	Bushing	nss	1	Available in set 903971 and 926369	
110	Handle	nss	1	Available in set 903971 and 926369	
111	Block	nss	1	Available in set 903971 and 926369	
112	Motor 300W	901861	1		
112	Motor 420W	928462	1		
113	Bracket motor	n/a	1		
114	Power cord	930014	1		
115	Bolt (guard disc)	901977	1		
116	Ball bearing	nss	2	Available as 901960	
117	Pulley	nss	1	Available as 901960	
118	Axle pulley	nss	1	Available as 901960	
119	Belt (TB2_420x16)	901854	1	Also in set 901960	
120	Bracket	n/a	1		
121	Plastic cap	n/a	1		
122	Meat scraper	930403	1	Incl item 177,178	
123	Cover switch	901847	1		
124	Switch	914953	1		
125	Capacitor	930410	1		
126	Bracket	n/a	1		
127	Knob grinding unit	nss	1	Available as 910771	
128	Knob (thickness adjustment)	930427	1		
129	Washer	n/a	1		
130	Cam	901878	1		
131	Bottom cover	901755	1		
132	Pin (cam)	n/a	1		
133	Guide rod	n/a	1		
134	Bracket	n/a	1		
135	Foot	901885	4		
136	Plate	n/a	2		
137	PCB	910788	1		
138	Spring	n/a	2		
139	Guide rod	n/a	1		
140	Guide rod	n/a	1		
141	Bracket	n/a	1		
142	Knob locking system	902295	1	Also in set 910971	
143	Cap	nss	1	Available as 910771	
144	Knob	nss	2	Available as 910771	
145	Grinding stone (fine)	901472	1	Also in set 910771	
146	Axle	nss	1	Available as 910771	
147	Nut	nss	6	Available as 910771	
148	Grinding stone (coarse)	901489	1	Also in set 910771	
149	Bolt	n/a	1		
150	Bracket	n/a	1		

151	E-clip	nss	2	Available as 910771	
152	Axle	nss	1	Available as 910771	
153	Bracket	nss	1	Available as 910771	
154	Bolt	n/a	2		
155	Guide rod	nss	1	Available as 903971	
156	Guard sledge	903988	1	Also in set 903971	
157	Plate	nss	2	Available as 903971	
158	Pulley (motor)	930434	1		
159	Plate	n/a	1		
160	Knob sledge	914922	1	Also in set 903971	
161	Washer	n/a	1		
162	Shaft with pulley assembly	901960	1	Incl item 116,117,119,164,165.	
163	Grinding unit complete	910771	1	Incl item 143,144,145,146,147,148 151,152,153,182	
164	Circlip	nss	1	Available as 910960	
165	Circlip	nss	1	Available as 910960	
166	Nut	nss	1	Available as 901946	
167	Hex bolt	nss	1	Available in set 926369 and 903971	
168	Bolt	nss	2	Available in set 903988 and 903971	
169	Nut	nss	2	Available in set 903988 and 903971	
170	Hex bolt	nss	1	Available in set 903971 and 914922	
171	Nut	nss	1	Available as 903971	
172	Nut locking pin	nss	1	Available as 903971	
173	Bolt	n/a	2		
174	Bolt	n/a	4		
175	Bolt	n/a	1		
176	Spring washer	n/a	1		
177	Bolt meat scraper	nss	2	Available as 930403	
178	Bolt meat scraper	nss	2	Available as 930403	
179	Washer	n/a	2		
180	Bolt	n/a	2		
181	Locking pin system	nss	1	Available as 903971	
182	Magnet	nss	1	Available as 910771	
183	Reed contact	924471	1		
184	Holder microswitch	n/a	1		
185	Microswitch	910689	1		

n/a -> not available

nss -> not sold separately

Circuit diagram

 <p>Hendi B.V. Steenoven 21 3911 TX Rhenen The Netherlands</p>	Batch #	Appliance part#
	0000000	210017
	Description	
	Slicer Hendi 300 ES	

Date	03-04-2013	Revision #	Revision version
Revision	First bill of materials (BOM)		

